

# Firm Qualifications and Project Portfolio



## Landscape Architecture & Planning



*in Community with Nature.*

# Summary of Firm Qualifications

After 25 years' experience in planning, landscape architecture, and municipal consultancy, Edward A. Theurkauf founded Theurkauf Design & Planning in 2011 with practice focused on service to municipalities, conservation organizations, and citizens groups. Our professional philosophy is built on enhancing the interdependent relationships of environmental protection, integrated and accessible networks of open spaces and trails, context appropriate development, flexible and adaptive use strategies for historic resources and settings, economic revitalization, and multimodal accessibility including pedestrian ways, bike routes, and public transportation. We currently serve as planning and landscape architecture consultants to the five-municipality Phoenixville Regional Planning Committee, to Charlestown, East Pikeland, Warwick, and West Whiteland Townships in Chester County, and as alternate land planners to Edgmont Township in Delaware County. We also collaborate regularly with French and Pickering Creeks Conservation Trust, Green Valleys Watershed Association, and Natural Lands on environmental, trail, and greenway issues critical to the region, and we are proud supporters of the preservation, education, and outreach work of the Schuylkill River Heritage Center.

Since inception, Theurkauf Design & Planning has provided services to numerous PA municipalities, including ordinance preparation, comprehensive planning, open space planning, trail planning, development plan reviews, ordinance reviews, expert witness testimony, and economic redevelopment planning. We have also coordinated our work with grant agencies, multi-municipal planning organizations, and County Planning Commissions in both Chester and Pike Counties in PA. Our projects have been managed for consistency with the PA Municipalities Planning Code, the Chester County Vision Partnership Program, the Federation of Northern Chester County Communities, and the Phoenixville Regional Planning Committee. In addition, our municipal trail and open space plans have been coordinated with adjacent municipalities, regional conservation groups including the Horse-Shoe Trail Club, French and Pickering Creeks Conservation Trust, and Natural Lands, and with regional open space and trail efforts including the French Creek Trail, the Horse-Shoe Trail, and the Schuylkill River Trail.

***Theurkauf Design & Planning offers its clients unique strengths in managing the challenges and opportunities afforded by growth and change.***

- *Comprehensive understanding of natural systems and the dependent interconnections of geology, hydrology, climate, soils, plants, animals, and people.*
- *Appreciation of the environmental and cultural basis of historical settlement patterns and how those patterns provide useful templates for contemporary development.*
- *Belief in the irreplaceable value of walking and bicycling between and through communities, for physical health and to strengthen social connections and environmental awareness.*
- *Awareness of the qualities that define a place, and the ability to use those qualities as the basis of planning and design.*
- *Capacity to integrate design at all scales, from regional context to construction detailing to ensure that all levels inform and enrich one another.*
- *Hands on familiarity with the interests and lexicon of municipal advisors and departments, including engineering, historical, environmental, legal, and public works.*



# Consultant Team

**Edward A. Theurkauf, ASLA, APA** is a Registered Landscape Architect with over 30 years of experience in planning and design, including over 20 years as a municipal planning and landscape architecture consultant to numerous PA municipalities in Chester, Delaware, Pike, and Berks counties. Ed earned his Masters of Landscape Architecture and the Faculty Medal for high academic record from University of Pennsylvania in 1986, studying under pioneer landscape architect and environmentalist Ian McHarg. He has worked extensively for functional and sustainable communities, growth management, economic vitality, intermodal accessibility, and conservation within the context of Municipal Comprehensive Plans; Zoning and Land Development Ordinances; Open Space, Recreation and Environmental Resource Plans; Plan Review and Inspections; Trail Plans and Feasibility Studies; Park Master Plans; and Yield and Build-out Analysis. Notable municipal projects include the award-winning 2006 Delaware Township Pike County Comprehensive Plan, and a Warwick Township Strategies Plan for Protection of the Hopewell Big Woods that will be used by Chester County as a model for municipalities. As an officer and member in outdoor recreational organizations, he has personally designed, constructed, and maintained over 50 miles of trails for use by bicyclists, hikers, and equestrians. Serving as a land planner and project manager on land development projects in the first seven years of his career has given Ed indispensable knowledge and perspective in that realm, enabling him to be a far more effective and practical municipal consultant. He supports regional stewardship and sound planning through memberships in the American Society of Landscape Architects, the American Planning Association, French and Pickering Creeks Conservation Trust, Natural Lands, Schuylkill River Heritage Center, Bicycle Coalition of Greater Philadelphia, Pennsylvania Environmental Council, and the Sierra Club. Ed serves as project manager and lead planner/landscape architect on all of our projects.

**Kelsey P. Stanton, Associate ASLA** is a 2012 graduate of Temple University and holds a Bachelor of Science in Landscape Architecture with a Certificate in Environmental Sustainability. She began working with Theurkauf Design & Planning in December 2012 and has broad experience in landscape architecture, streetscape enhancement, comprehensive plans, zoning, computer design and planning applications, environmental protection and restoration, native plant species, and digital publishing. Her specific skills include plant identification, habitat assessment, AutoCAD, and GIS mapping. Kelsey's prior work with Green Valleys Watershed Association affords her unique qualifications and insights in the health of watersheds and ecosystems. Kelsey provides planning, research, mapping, writing, and technical support under direction of Ed Theurkauf for various aspects of our work scope.



**A Municipal Partner** *that really gets it.*

# Phoenixville Regional Comprehensive Plan

Location:  
Chester County,  
Pennsylvania

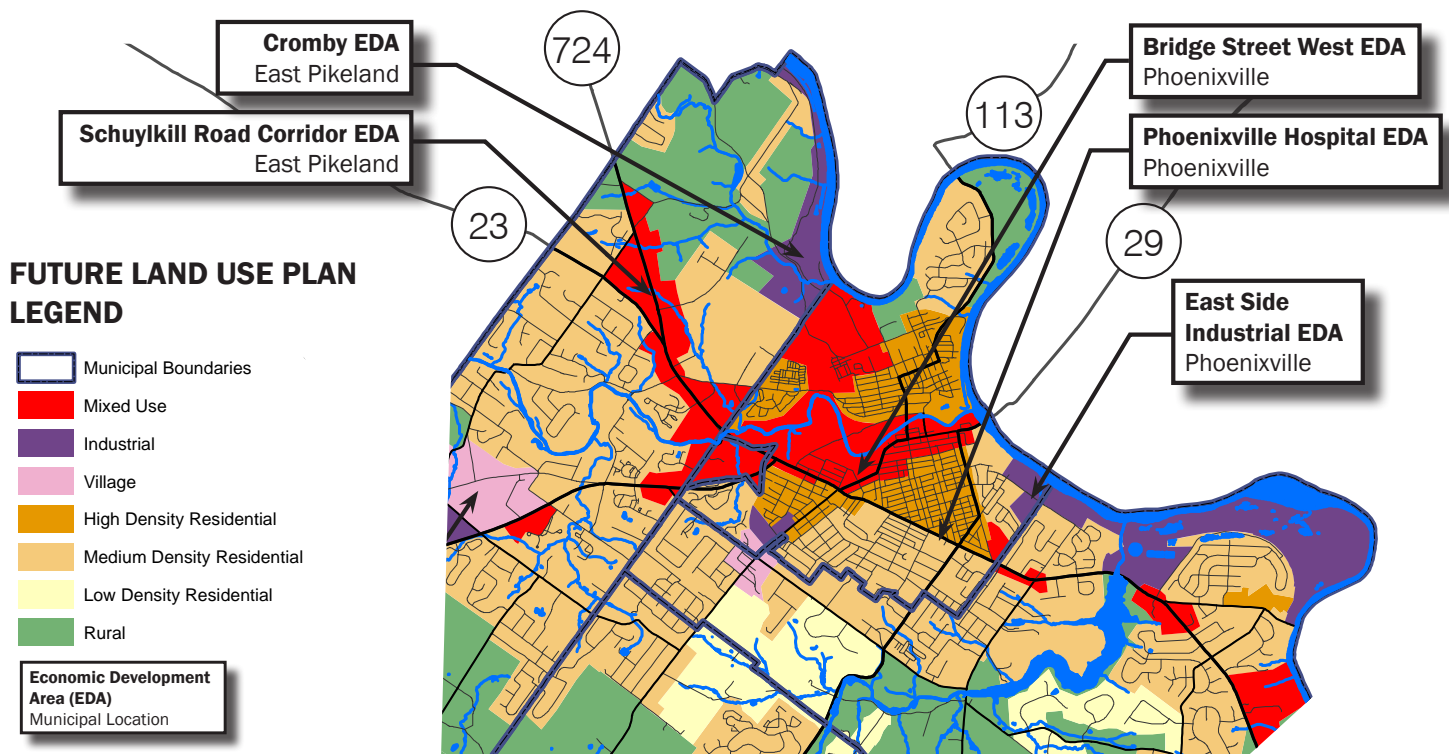
Client:  
Phoenixville Regional  
Planning Committee

Services Provided:

- Planning
- GIS Mapping
- Data Analysis
- Community Outreach

With a population of nearly 45,000 people, the Phoenixville region is one of the fastest-growing areas in Pennsylvania. Theurkauf Design & Planning is coordinating with Chester County and with the five municipal members of the Phoenixville Regional Planning Committee to update the region's comprehensive plan to direct long term natural resource protection, transportation planning, economic development, and community planning.

Active stakeholder and citizen participation is involved through an extensive community visioning process to ensure broad public support of the comprehensive plan. By conserving as the rural character of the region and focusing on development based on infill of already developed urban and village areas, the comprehensive plan will help ensure the continued vibrancy of the Phoenixville region.





# Phoenixville Regional Trail Plan

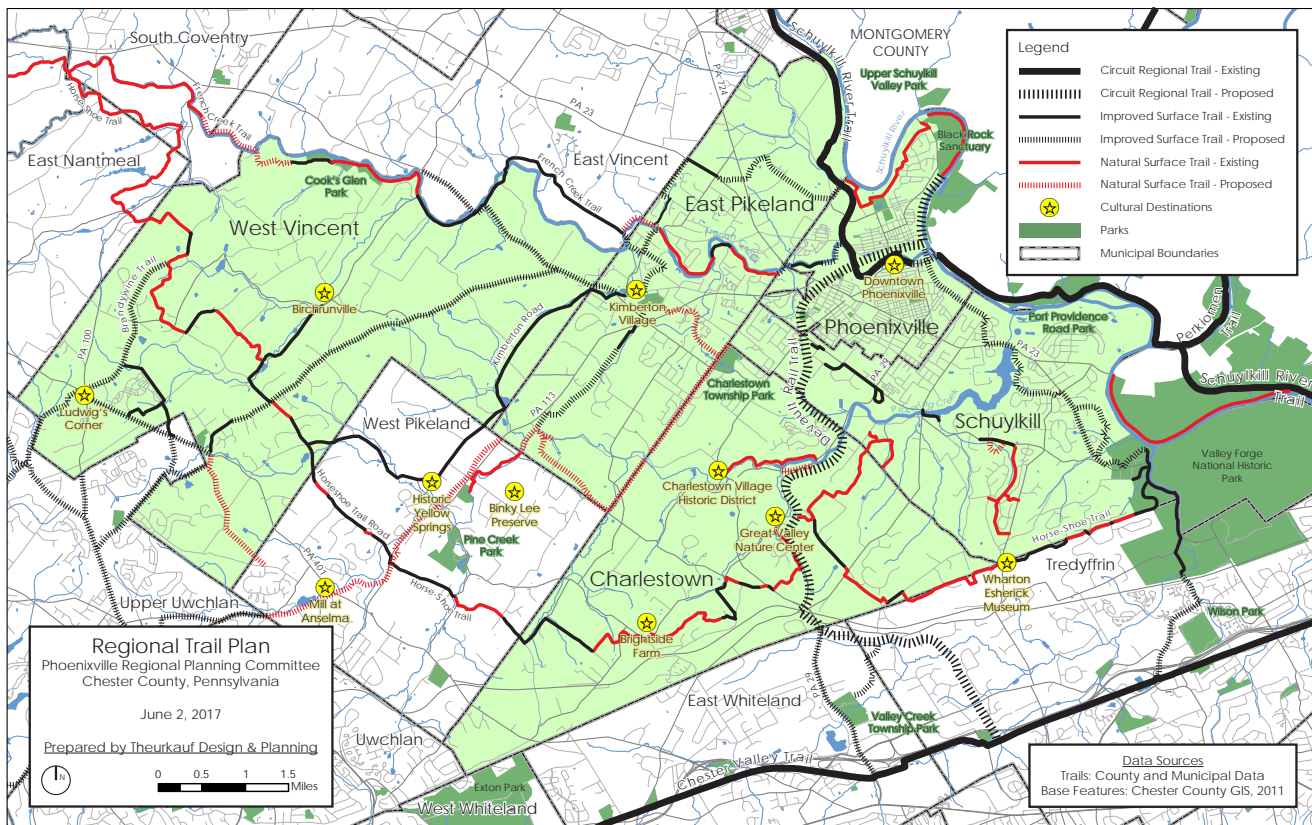
Location:  
Chester County,  
Pennsylvania

Client:  
Phoenixville Regional  
Planning Committee

Services Provided:  
• GIS Mapping



We created a regional trail map for five municipalities operating under a regional planning agreement in the greater Phoenixville area. GIS mapping in conjunction with consultation with each municipality produced an inventory of the region's network of improved surface and natural trails that are an important recreational asset for hikers, bicyclists, and equestrians. In addition to providing recreational wayfinding for residents and visitors, the map will be used to coordinate local government and development action to further develop and maintain the regional trail infrastructure.





# Open Space & Economic Development Plan

Location:  
Chester County, Pennsylvania

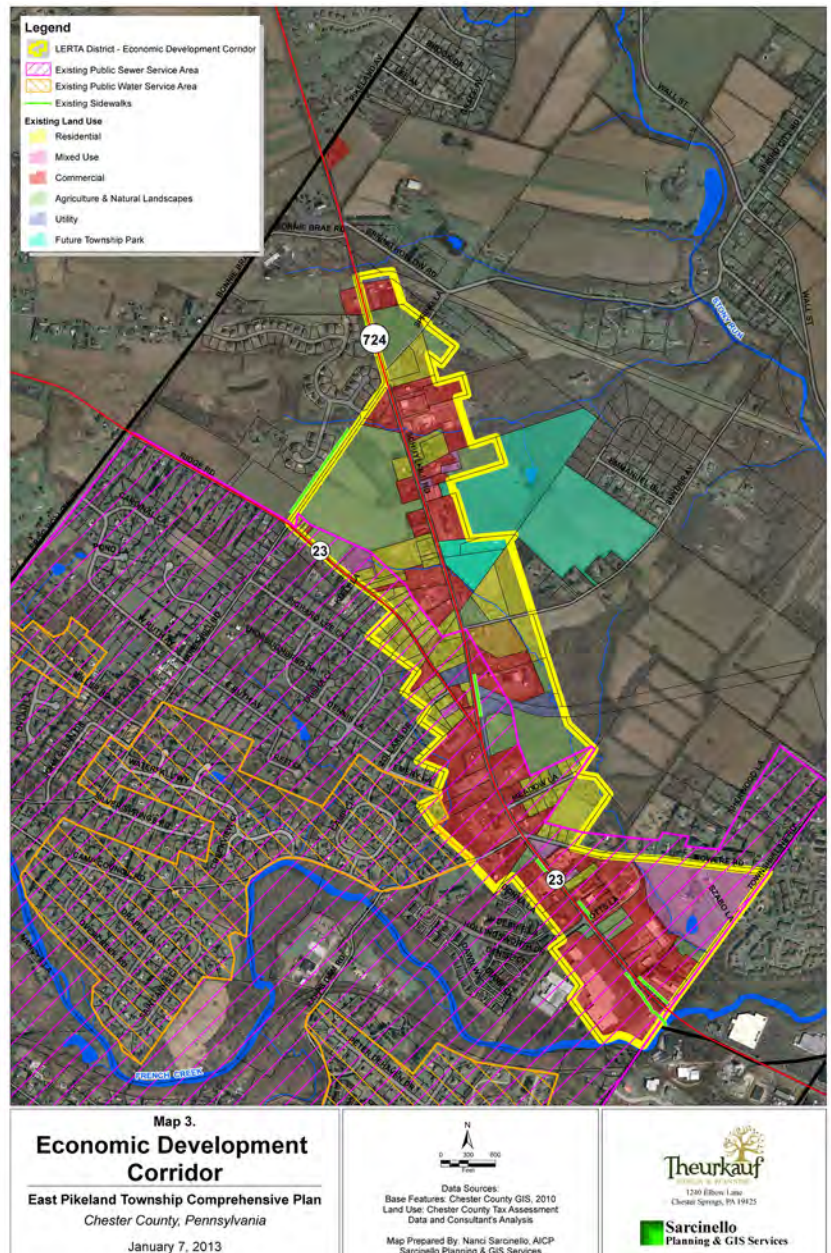
Client:  
East Pikeland Township

Services Provided:

- Master Planning
- Open Space Planning
- Economic Development

East Pikeland Township worked with Theurkauf Design & Planning to create a municipal comprehensive plan supplement for open space protection and economic development.

The plan's Open Space component creates a comprehensive system of greenways, trails, and preserved open lands that addresses community park and recreation needs while simultaneously protecting critical natural and agricultural resources. The Economic Development plan component utilized community and stakeholder input to craft regulatory and incentive strategies for development, redevelopment, and revitalization of the Township's mixed use highway corridor, as well as the promotion of a local and regional identity to foster a heritage tourism economy in a historic village within the heart of the Township.



**Theurkauf**  
DESIGN & PLANNING  
*In Community with Nature.*



# Hopewell Big Woods Comprehensive Plan Supplement

Location:

Northern Chester County,  
Pennsylvania

Client:

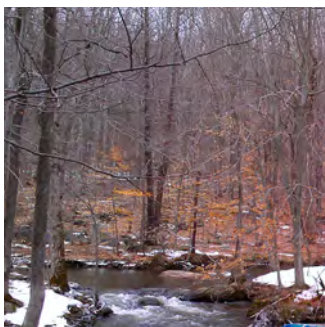
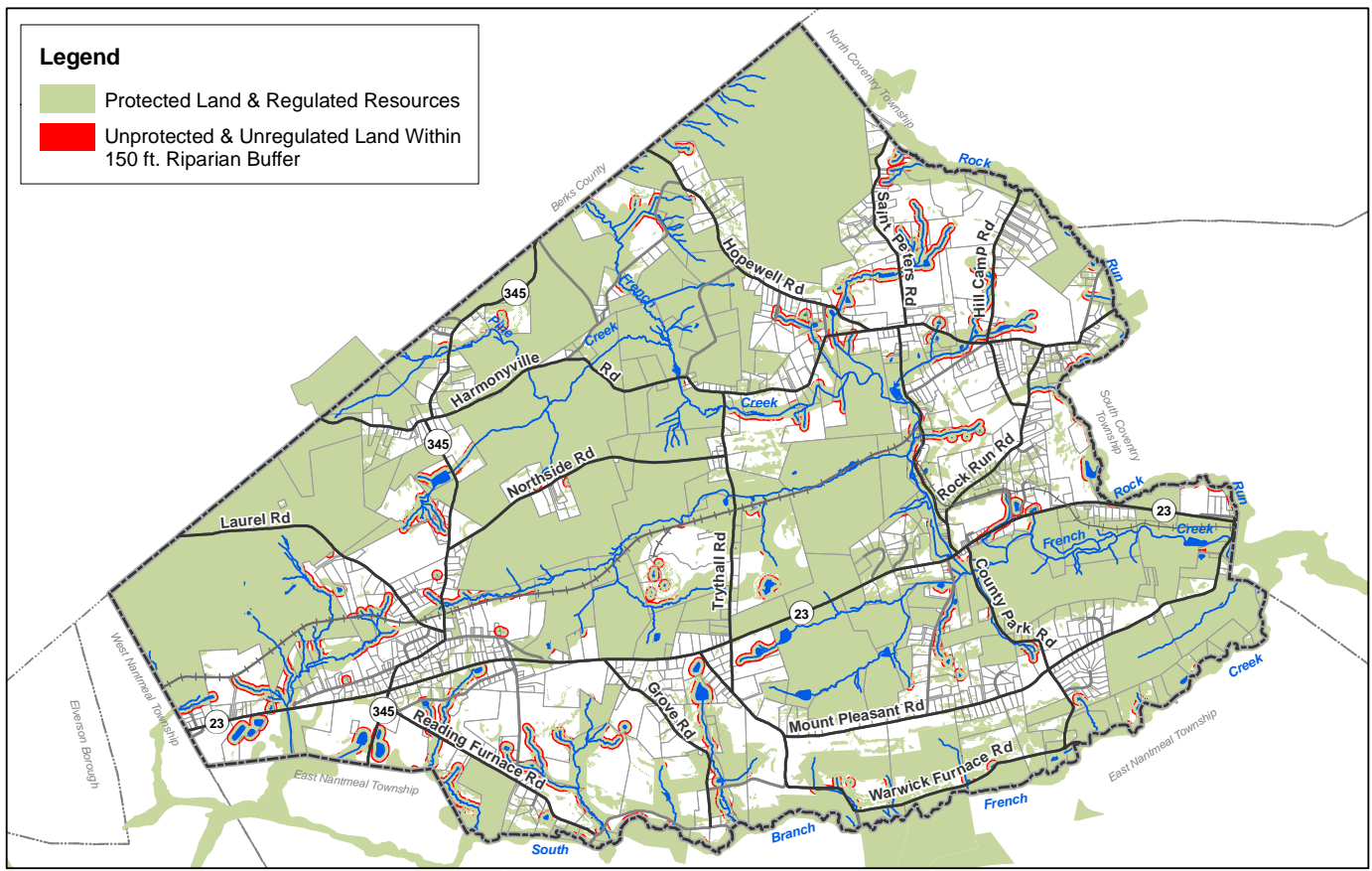
Warwick Township

Services Provided:

- Master Planning & Implementation
- Open Space Planning
- Ordinance Preparation

Theurkauf Design & Planning worked with Warwick Township in northern Chester County to maximize preservation of an irreplaceable ecological resource called the Hopewell Big Woods. An expanse of 15,000 intact forested acres in Chester and Berks Counties, the Big Woods is a landscape with local, national, and global significance that provides critical habitat and environmental benefits and serves as a rich repository of historic and recreational sites and features. Warwick Township is entirely within the Hopewell Big Woods and embraces its role as steward of the landscape's resources.

Utilizing the latest in scientific understanding and following intensive study, we introduced bold policies to protect the Big Woods within Warwick Township, including ordinances covering forestry, streams, critical habitats, dark skies, ridgelines and viewsheds.



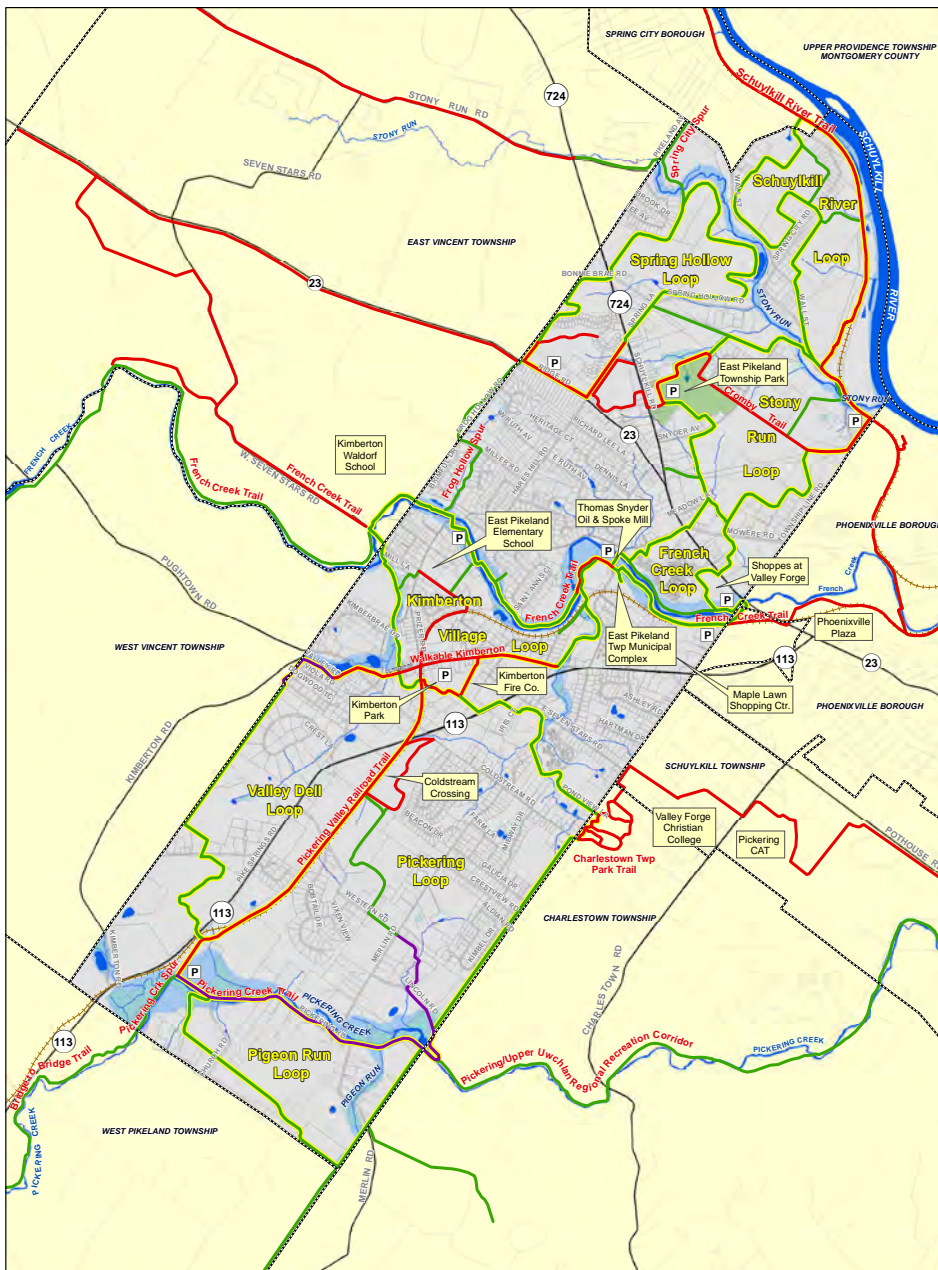
# Township Trail Plan

Location:  
Chester County,  
Pennsylvania

Client:  
East Pikeland Township

Services Provided:

- Master Planning & Implementation
- Open Space Planning



In collaboration with East Pikeland Township, Theurkauf Design & Planning created a municipal plan for hiking, equestrian, and biking trails. The trail plan includes multi-use paved primary trails and natural surfaced hiking/equestrian/mountain biking trails arranged in loops connecting critical destinations such as residential neighborhoods, commercial centers, recreation facilities, and civic/ cultural resources. Connections to existing and proposed trails in adjacent municipalities are incorporated in the plan, including links to regional trails such as the Schuylkill River Trail, the Pickering Creek Regional Recreation Corridor, and the French Creek Trail.

Through this proactive approach, East Pikeland Township assures its residents a permanent and comprehensive system of trail accessibility, with myriad accrued benefits to the environment and community.



# Open Space Inspections

Location:

Chester County,  
Pennsylvania

Client:

Charlestown Township

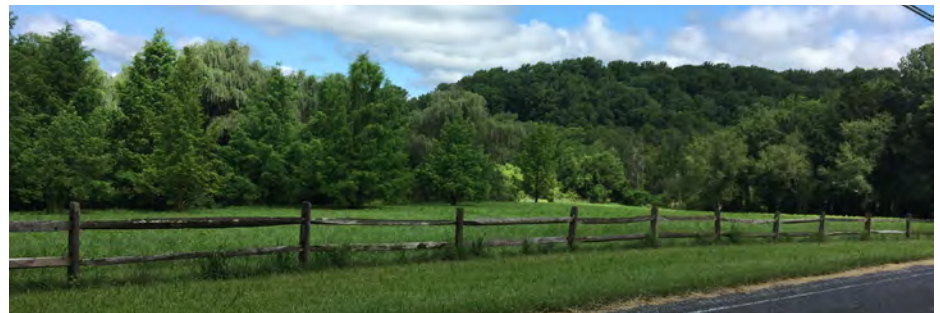
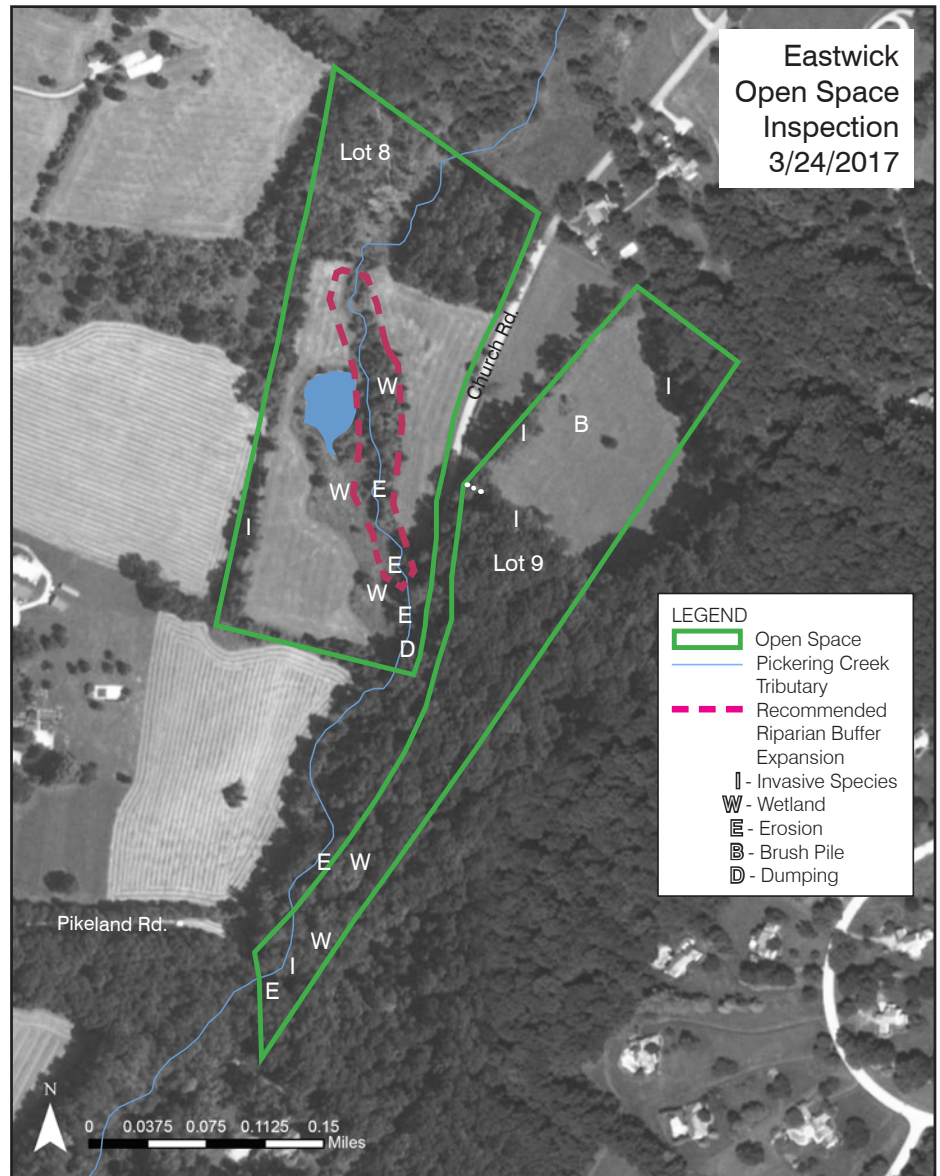
Services Provided:

- Inspection Reports
- Open Space Management Recommendations
- Stormwater Functional Analysis

We perform biannual inspections of Charlestown Township's open spaces and stormwater management facilities. The inspections include comprehensive reviews of the condition of the land, the function of stormwater facilities, the health of native plant communities, monitoring for illegal use, public safety, and the impact of recreational uses.

We prepare maps of the site, document conditions with photography, and prepare reports on the current condition of the site as well as a series of management recommendations. We also advise the township on developer compliance with the conditions of plan approvals and on the condition of public improvements and trails.

Our recommendations include proposals for effective invasive species control, upkeep and enhancement of stormwater facilities and suggested improvements for trail systems and other recreational elements, thereby benefiting the Township and landowners.



*In Community with Nature.*

## Development Plan Evaluations

Location:

Downingtown,  
Pennsylvania

Client:

West Whiteland Township

Services Provided:

- Commercial Development Plan Review
- Historic Resource Protection Recommendations

### Park Family Property Plan Evaluation



A flex office campus was proposed in the western end of West Whiteland Township in the limestone geology of the Great Valley in Chester County, Pennsylvania. We conducted an on-site inspection of the heavily wooded property in review of the plan, and discovered an unusual stone ruin, which

had been covered by debris in an old farm dump. Closer investigation revealed this to be a historic lime kiln that was unknown to the developer and the Township. The proposed development would have obliterated this significant relic. Working with the Township, we persuaded the developer to reconfigure the plan to protect the lime kiln and allow for its visitation by the public, thereby bringing to life a forgotten piece of Township history. There is no substitute for rigor in understanding site conditions.

Location:

Malvern, Pennsylvania

Client:

Charlestown Township

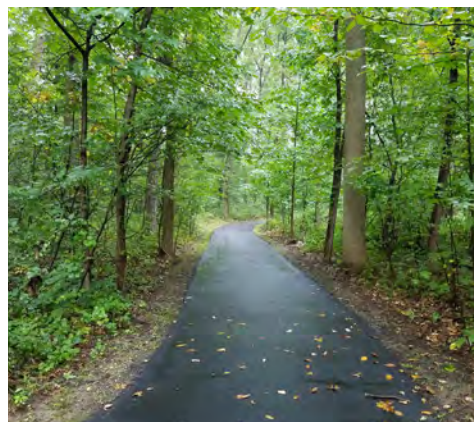
Services Provided:

- Residential Development Plan Review
- Natural Resource Protection Recommendations

### Charlestown Meadows Plan Evaluation

The original design for Charlestown Meadows Planned Residential Development failed to meet Township open space and environmental protection requirements. Located in the North Valley Hills above Chester County's Great Valley, the proposed development would have fragmented one of the region's few remaining uninterrupted stands of mature forest. Further, a proposed on-site sewage system would have significantly impacted the remaining woodland, jeopardizing its long-term viability. Working with the Township, we convinced the developer to reconfigure the plan to maximize preservation of the highest quality woodland and minimize forest fragmentation. In addition, the developer was compelled to extend public sewer to serve the property, thereby preventing further environmental impacts to preserved woodlands. Finally, a paved walking path with fitness stations was required to address recreational needs, while

providing residents with access to the pristine natural setting with potential offsite connections to the regional trail and recreation system.





# French Creek Trail

Location:

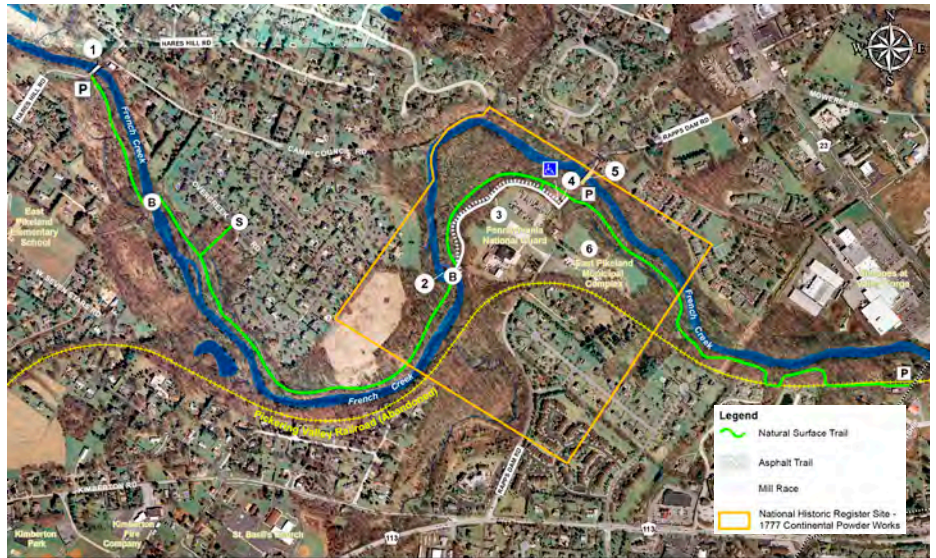
East Pikeland Township,  
Pennsylvania

Client:

East Pikeland Township

Services Provided:

- Trail Design
- Construction
- Documentation
- DCNR Grant Compliance



The French Creek Trail is part of a regional trail that provides access to and interpretation of a national register historic site and links Township trails to the Schuylkill River Trail. The trail will ultimately connect French Creek State Park and Valley Forge National Historic Park, creating an important regional recreation corridor. Most of the trail is unimproved natural surface, except for the historic area, which features a quarter mile paved ADA-accessible trail with handicap parking.





# Brightside Farm

Location:  
Malvern, Pennsylvania

Client:  
Charlestown Township

Services Provided:

- Master Planning
- Open Space Planning
- Trail Design

In 2015, Theurkauf Design & Planning partnered with Advanced Geoservices to provide a trail design for the historic Brightside Farm. The plan was developed in conjunction with various stakeholders, including members of the Parks and Recreation Board, the Historical Society, the Brightside Farm Committee, the Trails Committee, and other interested citizens.

The trail system includes a paved, multi-use loop trail of one mile, unimproved trails for equestrians and hikers, and parking including handicap accessibility. The trail alignment showcases the culturally significant landscapes of the farm property while providing connections to existing and proposed elements of the Township and regional trail system.





# Motel Residence

**Location:**  
Malvern, Pennsylvania

**Client:**  
Private Residence

- Services Provided:**
- Residential Site Design
  - Ecological Management Recommendations

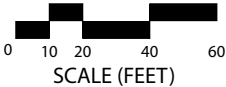


By utilizing an ecological approach to site design, we created a high-quality landscape experience for the homeowner, and by better integrating the whole site with its surroundings, enhanced the function of its natural systems.

A native wildflower meadow, a rain garden, deer enclosure fencing, and an invasive species management program were employed in order to ensure the site functions as an appealing environment for the homeowner, and as an ecologically balanced landscape that supports native plant and wildlife communities.



TREE / SHRUB KEY							
SYMBOL	NAME	COMMON NAME	QTY.	SYMBOL	NAME	COMMON NAME	QTY.
	Amelanchier canadensis	Canadian serviceberry	3		Hydrangea quercifolia	Oakleaf Hydrangea	6
	Aesculus parviflora	Bottlebrush Buckeye	2		Ilex verticillata 'Sin Candy'	Winterberry Holly (male)	1
	Betula nigra 'Heritage'	River Birch	3		Ilex verticillata 'Winter Red'	Winterberry Holly (female)	3
	Celtis occidentalis	Sweet Pepperbush	5		Prunus laurocerasus	Cherry Laurel	10
	Cercis canadensis	Eastern Redbud	3		Prunus pennsylvanica 'Ottoman'	Dwarf Cherry Laurel	5
	Cornus florida	Flowering Dogwood	4		Vaccinium angustifolium	Lowbush Blueberry	10
	Cornus kousa	Kousa Dogwood	1		Vaccinium corymbosum	Highbush Blueberry	7
	Fothergilla gardenii 'Mt. Airy'	Dwarf Fothergilla	5		Viburnum carlesii	Korean Spice Viburnum	7
	Hypericum frondosum	St. John's Wort	12		Viburnum hybridum	Loatherleaf Viburnum	8



*In Community with Nature.*



# Charlestown Woolen Mill

Location:

Malvern, Pennsylvania

Client:

Charlestown Township

Services Provided:

- Historic Resource Enhancements
- Open Space Programming
- Ecological Planting Design & Management Recommendations

This project involved planting and site improvements on the grounds associated with an 18th century water-powered mill located in Charlestown's historic village district. As an important part of the region's cultural history, the grounds were in need of a redesign to complement the architecture of the mill, enhance the ecological function of the site, and facilitate the use of the property for public functions.

The scope of work included planning for the control of invasive species, restoration of native plant communities, and the design of a sculpture garden based on the footprint of a former residence.

In addition to native landscape plantings, a disused mill race was re-imagined as a river of stone, surrounded on either side by a native riparian grass meadow. A pathway, steps, and seating wall were installed as part of the sculpture garden, which can host public events and function as an educational and historic exhibit.





# Charlestown Park



Location:

Phoenixville, Pennsylvania

Client:

Charlestown Township

Services Provided:

- Master Planning & Park Design
- Landscape Improvements
- Construction Documentation

Charlestown Park is the most heavily utilized component of Charlestown's open space network and serves all ages and abilities. The Master Plan for the 41-acre park was undertaken in 2001 to coordinate ongoing improvements and to facilitate eligibility for county grants for future improvement projects. Theurkauf Design & Planning coordinated with the Township and engineers in 2015 to upgrade park facilities, including improvements to sports fields, parking with nature-based stormwater management, playgrounds, picnic facilities, conservation areas with native successional vegetation, and an extensive multi-use path system. The plan to develop ecologically serves the current population and will evolve into the future.





## Streambank Stabilization

Location:

Birchrunville, Pennsylvania

Client:

Private Residence

Services Provided:

- Stream Channel Restoration & Planting Design
- PA DEP Coordination & Approval

Theurkauf Design & Planning partnered with LTL Consultants to plan the restoration of a tributary of French Creek, an Exceptional Value stream. The stream channel had been diverted decades ago to create a farm pond, and subsequent upstream runoff had caused significant erosion in the channel, threatening the stability of the pond dam. A breach of the dam would have caused significant negative downstream consequences for the Exceptional Value stream. A watershed analysis was performed to enable the creation of a channel design with vegetative stabilization to accommodate stream base flows and design storm volumes.

Following a review by the PA Department of Environmental Protection (DEP), the plan was implemented. A berm and redesigned culvert were installed to direct water flows to a re-engineered and stabilized channel. The channel, in conjunction with a stilling pool, was installed to dissipate the energy and allow the stream to then flow into the downstream channel at lower velocities. Stone was used to stabilize the channel at critical points.

In addition to these structural elements, bioengineering plantings of native shrubs were installed to stabilize the stream channel and improve habitat. In addition to the stream itself, a meadow area was regraded to accommodate and slow some stormwater. The meadow was planted with native wet meadow herbaceous species including sedges, rushes, wildflowers, and warm season grasses.



*Before*



*After*



*In Community with Nature.*



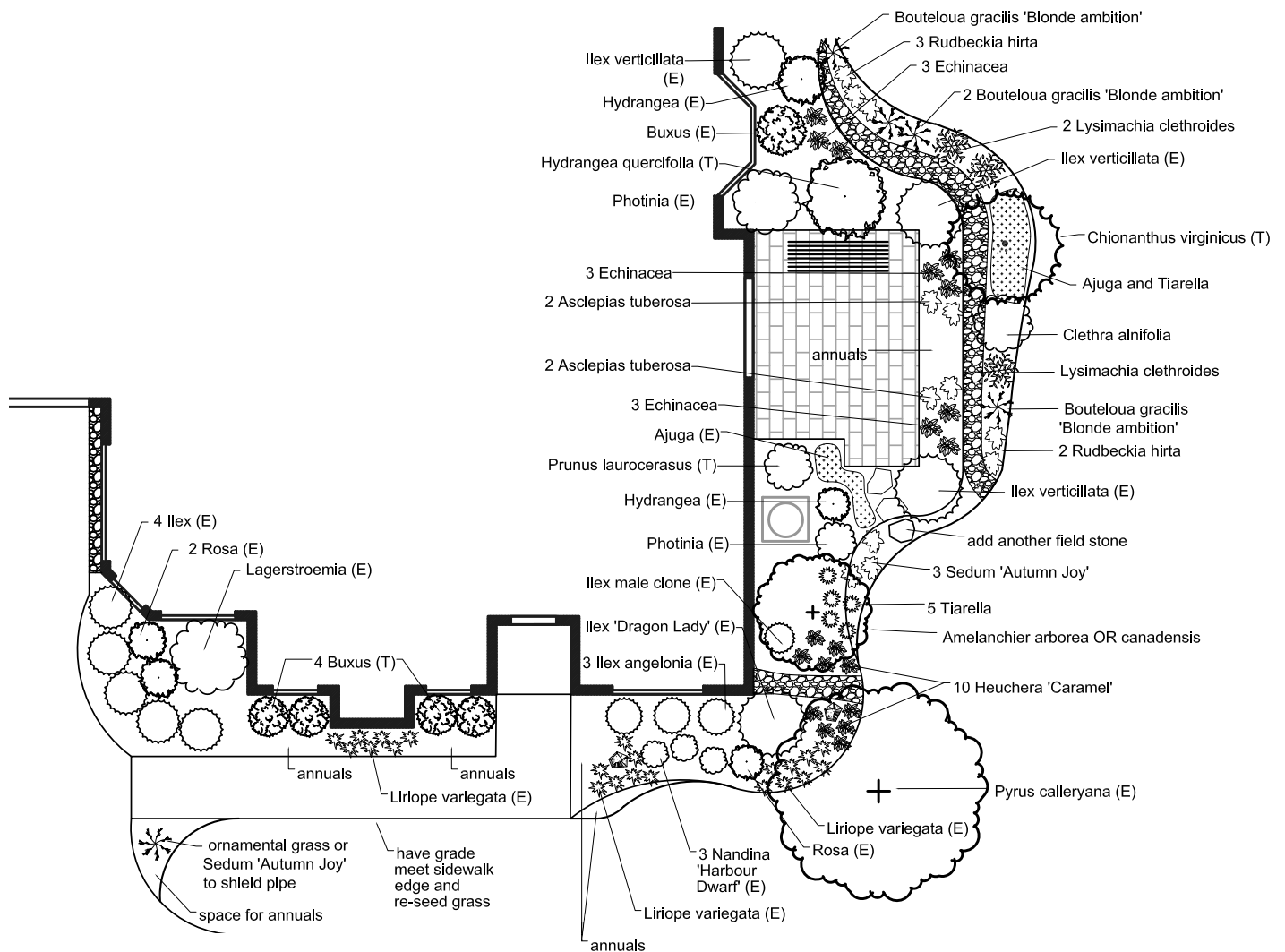
# Eshbach Residence

Poor site construction practices and landscaping selections had created an unsatisfactory garden at a townhouse development, affording the owner little privacy and plantings that either could not survive conditions or crowded use areas such as patios and walkways. We devised a landscape plan to address areas of poor drainage and select plantings that would provide privacy and seasonal beauty without requiring extensive maintenance.

Location:  
Limerick, Pennsylvania

Client:  
Private Residence

Services Provided:  
• Planting Design



**Theurkauf**  
DESIGN & PLANNING

*In Community with Nature.*

# PennDOT Basin Landscaping

Location:  
Devault, Pennsylvania

Client:  
Charlestown Township

Services Provided:

- Planting Design
- Ecological Management Recommendations
- PennDOT Grant Compliance

At one of the critical visual gateways to Charlestown Township, highway detention basins developed by PennDOT had grown into weedy thickets of invasive plants, while exposing a high rip-rap embankment to the Pennsylvania Turnpike. Working with ecological restoration specialists GreenWeaver Landscapes and the Township, we devised a plan to establish and maintain native meadows in and around the basins, and pockets of evergreen and deciduous trees within the highway embankments to provide necessary buffering. Today the site hosts many species of songbirds and pollinating insects in what had previously been a virtually uninhabitable area.





# Kimberton Park Amphitheater

Location:

Kimberton, Pennsylvania

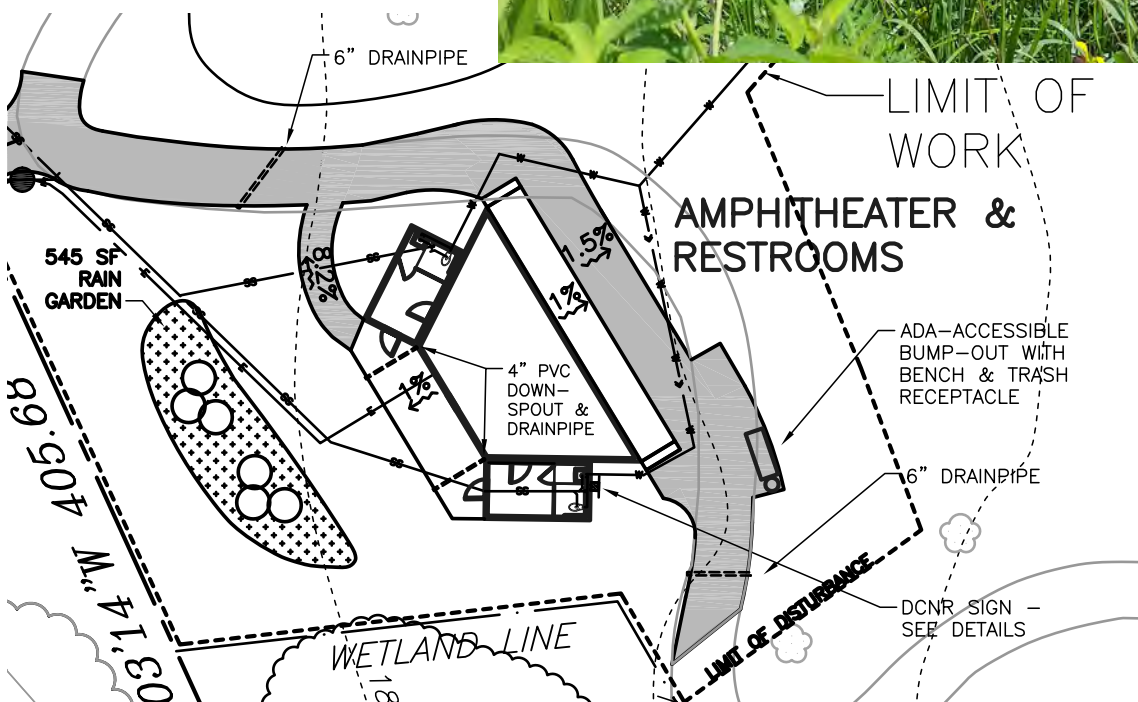
Client:

East Pikeland Township

Services Provided:

- Park element layout & design
- Stormwater management design
- Construction documentation
- DCNR Grant Compliance

We assisted East Pikeland Township with site planning, design, and a PA DCNR grant application for this performance venue within Kimberton Park. The project includes handicap access and parking, a paved trail, and a native planting rain garden for water quality enhancement and stormwater management.





Location:

Easttown Township,  
Pennsylvania

Client:

Neighborhood Citizens  
Group

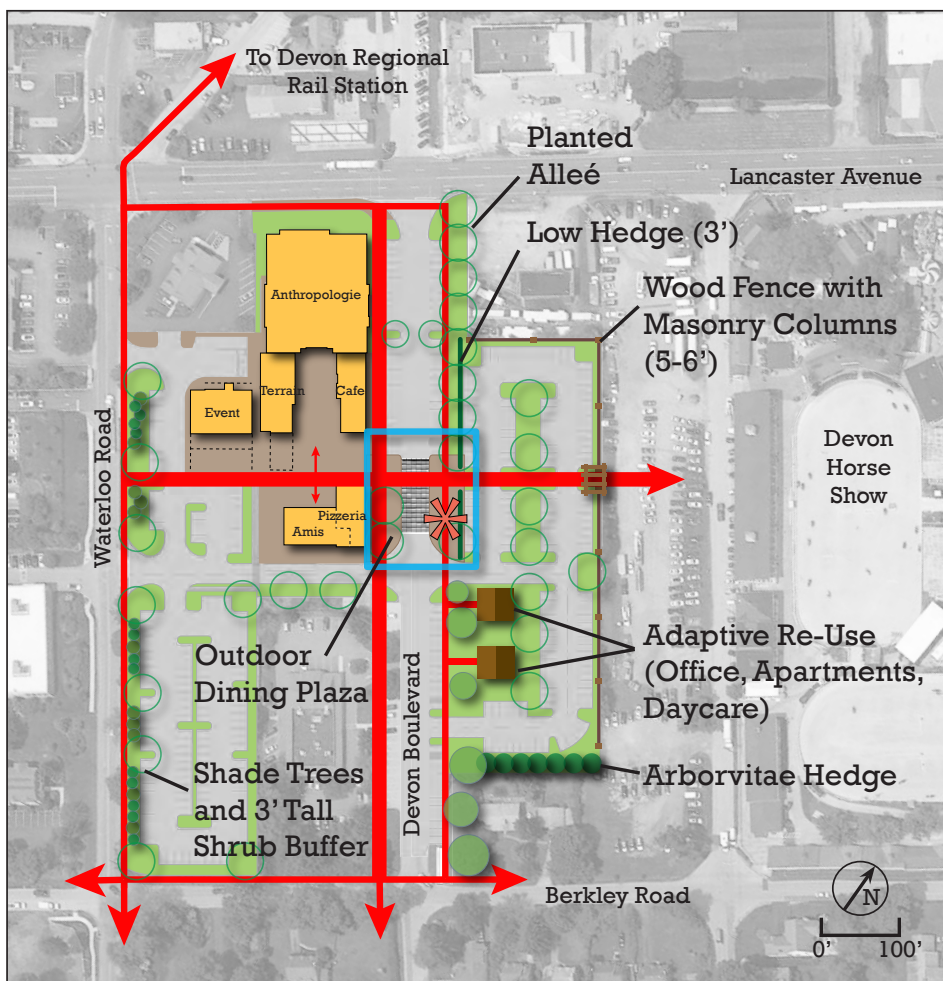
Services Provided:

- Neighborhood Advocacy
- Conceptual Site Design

At the request of a neighborhood advocacy group, we proposed site design concepts as alternatives to a large mixed residential/commercial development that would have imposed a five story apartment building into an established quiet single family setting, without regard to historical or neighborhood context.

Our goal was to convince the developer and municipality to create a better sense of integration with the surrounding area. Where a single purpose parking lot had been proposed previously, we imagined an outdoor dining plaza and park area, to provide a distinctive public space with access to transportation networks and neighboring attractions. Pedestrian circulation and interconnections, sight lines, and landscaping were all considered in the service of developing a more walkable visitor experience, and a development more fitting with the existing neighborhood character.

As a result, the developer's design team removed the large apartment building from the proposal and is working with the community to enhance neighborhood compatibility and the public experience of the space.

Legend

- Park/Seating Area
- Public Square
- Pedestrian Circulation
- Arbor/Gateway Feature
- Cobbles/Traffic Calming



# Lackawanna Energy Center

Location:

Jessup Borough, Pennsylvania

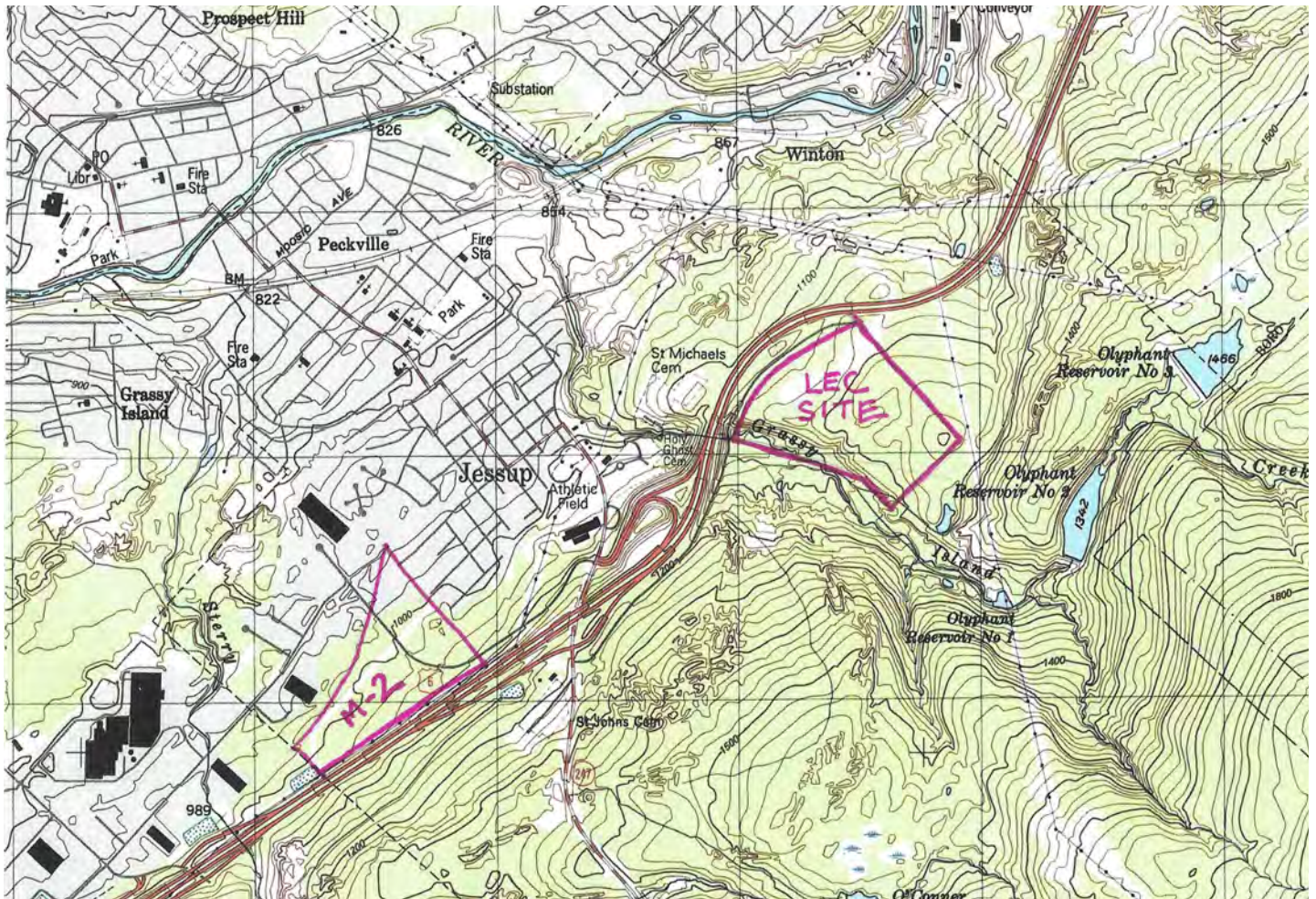
Client:

Neighborhood Citizens Group

Services Provided:

- Neighborhood Advocacy
- Land Use / Zoning Assessment
- Expert Witness Testimony

We worked with Citizens for a Healthy Jessup in opposition to a zoning Curative Amendment that would allow a 1500 MW gas fired power plant to be placed prominently above and very close to established residential neighborhoods. We maintained that the Applicant's charge of exclusionary zoning was spurious in that there was no de jure nor de facto exclusion of the use, and that the facility as proposed would have deleterious health, environmental, economic, and aesthetic impacts on the community. Our testimony relied on analysis of existing regulations, site and context, MPC requirements pertaining to Curative Amendment, and comparative study of similar facilities in other areas.



*In Community with Nature.*



QUALIFICATIONS AND EXPERIENCE – May, 2019

Edward A. Theurkauf, RLA, ASLA, APA  
Principal and Manager



## Professional Qualifications and Education

---

- Registered Landscape Architect LA-1061 E  
Commonwealth of Pennsylvania (1990)
- Master of Landscape Architecture  
University of Pennsylvania (1986)
- Member, American Society of Landscape Architects (ASLA)  
Pennsylvania/Delaware Chapter
- Member, American Planning Association (APA)  
Pennsylvania Chapter

## Work History

---

Over 30 years of professional experience in landscape architecture and planning:

- Founded Theurkauf Design & Planning LLC in May 2011, specializing in municipal planning and landscape architecture services.
- Specialized in municipal planning and landscape architecture services from 1998-2011 as the senior municipal planner/landscape architect for Thomas Comitta Associates, Inc., West Chester PA.
- Managed projects and clients as a landscape architect from 1993-1997 on high end landscaping design/build contracts, primarily with Robert Montgomery Landscapes, Inc., Chester Springs PA.
- Designed and managed land development projects as an associate/land planner/landscape architect from 1986-1992 with Kinzler & Ritter/Land Planning, Philadelphia PA.



## QUALIFICATIONS AND EXPERIENCE – May, 2019

Edward A. Theurkauf, RLA, ASLA, APA  
Principal and Manager



## Professional Accomplishments

---

Responsible for the following services and completed projects:

- Serves as planning and landscape architecture consultant to Charlestown, East Pikeland, Warwick, and West Whiteland Townships in Chester County, and as alternate land planner to Edgmont Township in Delaware County and Upper Frederick Township, Montgomery County.
- Serves as planning consultant to the Phoenixville Regional Planning Committee (PRPC), a multi-municipal planning effort comprised of Phoenixville Borough and Charlestown, East Pikeland, Schuylkill, and West Vincent Townships. Lead planner for the PRPC Multi-municipal Comprehensive Plan, pending adoption in Fall 2019.
- Authored and facilitated Municipal Comprehensive Plans for Warwick, Chester County (2015), East Pikeland Township, Chester County (2013), West Pikeland Township, Chester County (2010), and Delaware Township, Pike County (2006).
- Prepared complete Zoning Ordinance (2007) and Subdivision/Land Development Ordinance (2008) for Delaware Township, Pike County, combining a form-based Town Center District with innovative and aggressive environmental protection regulations.
- Executed scores of Zoning and Land Development Ordinance amendments for several Pennsylvania municipalities pertaining to environmental protection, land use, open space, recreation, land use, complete streets, multi-modal transportation accessibility, density controls, transferable development rights, landscaping, stormwater, design standards, signs, billboards, agriculture, and traditional neighborhood development.
- Prepared numerous Master Plans, Feasibility Plans and Improvement Plans for municipal parks and trails in Pennsylvania.
- Provided development plan review and landscape improvement inspection services to 15 Pennsylvania municipalities.
- Conducted inspections and prepared management recommendations for open space and stormwater management facilities.
- Designed and managed landscape and site remediation projects in rural, suburban, urban, and industrial settings in Pennsylvania, New Jersey, and Delaware.
- Served as an expert witness on behalf of 13 Pennsylvania municipalities in matters before Governing Bodies and Zoning Hearing Boards.



## QUALIFICATIONS AND EXPERIENCE – May, 2019

Edward A. Theurkauf, RLA, ASLA, APA  
Principal and Manager



## Professional Accomplishments cont'd.

---

- Provided expert witness testimony pertaining to development proposals on behalf of numerous citizens groups.
- Worked with Green Valleys Watershed Association to advance Riparian Buffer protection in northern Chester County, PA through educational sessions and model ordinances.
- Created plans and analysis of site development potential for conservation easements, development right purchases/transfers, and for facility improvements.
- Managed staff production of plans, graphic exhibits, reports, and supporting analysis.
- From 1986-1992, prepared plans, supporting illustrations, analysis, and reports for over 100 land development projects including residential, commercial, office, industrial, and mixed-use proposals in Pennsylvania and New Jersey.

## Awards

---

Received awards or participated in award-winning projects as follows:

- Pike County PA Conservation District  
Environmental Protection Award for Delaware Township Comprehensive Plan (2007)
- Chester County Flower Show – with Robert Montgomery Landscapes, Inc.  
Best in Show (1997)
- Philadelphia Flower Show - with Robert Montgomery Landscapes, Inc.  
Best Achievement Award/Outdoor Living (1996)
- University of Pennsylvania/Landscape Architecture and Regional Planning  
Faculty Medal for Academic Excellence (1986)
- Washington D.C. Flower Show – with R.J. Lewis Landscaping  
Best in Show (1983)
- Trinity College  
S&S Prize for Environmental Action (1981)

## QUALIFICATIONS AND EXPERIENCE – May, 2019

Edward A. Theurkauf, RLA, ASLA, APA  
Principal and Manager



## Continuing Education

---

Maintains proficiency with state of the art practice through rigorous continuing education:

- Regular participation in major conferences and symposia on environmental science and design, trails and bikeways, native plants, ecological restoration, transportation, greenways, sustainable development and smart growth, stormwater, habitat and natural resource protection, traditional neighborhood development, tree protection, wetlands, and aquatic environments.
- Course work at West Chester University's Graduate Department of Planning in demography and the PA Municipalities Planning Code.

## Teaching Experience

---

Gave instruction to university students:

- West Chester University, Department of Planning and Geography  
Guest Lecture – Environmental Protection and Planning (June 2004)
- University of Pennsylvania, Graduate School of Fine Arts  
Department of Landscape Architecture and Regional Planning  
Guest Lecture/Field Study – Ecology, Planning, and Design (May 2002)

Served on university student juries:

- University of Pennsylvania, School of Design, Department of Landscape Architecture  
ASLA Graduate Student Award Jury (2019)
- Temple University, Landscape Architecture Departments  
ASLA Graduate and Undergraduate Student Award Juries (2012 through 2018)

Presented at conferences and workshops

- PA Environmental Advisory Council Workshop  
Green Valleys Watershed Association  
Design and Planning Process for Green Infrastructure (2017)
- Green Design Saves Green Conference  
Green Valleys Watershed Association  
Municipal Planning Practices for Green Infrastructure (2016)



QUALIFICATIONS AND EXPERIENCE – May, 2019

Kelsey P. Stanton, ASLA  
Landscape Designer/Planner



## Professional Qualifications and Education

---

- Bachelor of Science in Landscape Architecture  
Certificate in Environmental Sustainability  
Temple University (2012)
- Member, American Society of Landscape Architects (ASLA)  
Pennsylvania/Delaware Chapter

## Work History

---

Brings diverse experience in land design, planning, and natural resource restoration:

- Provide municipal planning and landscape architecture services as a landscape designer/land planner for Theurkauf Design & Planning LLC from 2012-2016, and 2018 onward.
- Coordinated public engagement and secured grant funding for water quality restoration & citizen science initiatives from 2012-2017, first as the watershed restoration specialist, and then as the communications & volunteer coordinator for Green Valleys Watershed Association, Pottstown PA.
- Designed, maintained, and documented stormwater best management practices and natural lands habitats in 2011-2012 as an intern for Land Ethics LLC, Kennett Square PA, and Green Valleys Watershed Association, Pottstown PA.
- Assisted in research and concept plan compilation in 2010 as an extern for Andropogon Associates Ltd., Philadelphia PA.

QUALIFICATIONS AND EXPERIENCE – May, 2019

Kelsey P. Stanton, ASLA  
Landscape Designer/Planner



## Professional Accomplishments

---

Responsible for the following services and completed projects:

- Provide development plan review and landscape improvement inspection services for municipalities
- Conduct municipal open space inspections for easement compliance and restoration & improvement recommendations
- Create supporting graphics for inclusion in comprehensive plans and legal exhibits for firm's municipal and citizen's group clients, as well as for the Phoenixville Regional Planning Committee
- Assisted on amendments of zoning and subdivision and land development ordinances for increased protection of environmental resources in Warwick, Chester County (2016) and for protection of water quality in Lake Michigan in West Allis, Wisconsin (2019).
- Prepared Master Plans and Improvement Plans for municipal parks and trails in Charlestown and East Pikeland, Chester County (2013, 2015, 2016, 2018)
- Designed landscape improvements plans for residential clients in Charlestown (2013) and Tredyffrin (2018)
- Provided planning, research, mapping, and technical support toward zoning ordinance amendments for the Kimberton retail district in East Pikeland, Chester County (2016)
- Compiled the Protection Plan for the Hopewell Big Woods, a Municipal Comprehensive Plan for Warwick, Chester County (2015)
- Provided mapping, grant management, design, and technical support toward multiple grant-funded watershed restoration initiatives while at Green Valleys Watershed Association (2013 – 2017).



## QUALIFICATIONS AND EXPERIENCE – May, 2019

Kelsey P. Stanton, ASLA  
Landscape Designer/Planner



## Awards

---

Received awards or participated in award-winning projects as follows:

- Temple University  
Above Below Beyond – with School of Environmental Design (SED) Senior Studio, Spring 2012  
American Society of Landscape Architects (ASLA) Student Honor Award/Communications (2013)  
Philadelphia Flower Show – with SED Design/Build Studio, Spring 2011  
ASLA, Pennsylvania/Delaware Chapter Honor and People's Choice Awards/General Design (2012)  
Garden Club of America Bulkley Medal (2011)  
Envisioning Francisville's Future – with SED Sophomore Studio, Spring 2010  
ASLA Student Honor Award/Analysis & Planning (2011)
- Taylor Residence – with Land Ethics LLC  
SITES (Sustainable Sites Initiative™)-certified residential project (2012)

## Continuing Education

---

Maintains proficiency with state of the art practice through continuing education:

- Regular participation in conferences and symposia on environmental science and design, native plants, ecological restoration, sustainable development, stormwater, and habitat and natural resource protection.
- Course work at West Chester University's Graduate Department of Geography and Planning towards a Certificate in Geospatial Information Technology (2018-present).

## Teaching Experience

---

Gave instruction to citizen science volunteers:

- Green Valleys Watershed Association, Schuylkill Water Stewards program  
Instructor – Water Quality Monitoring (Fall 2014; Spring 2015, 2016, 2017)

Presented at watershed science conferences:

- Green Valleys Watershed Association, 2014 Watershed Congress  
Co-lecturer – Retrospective Survey of Stormwater Detention Basins (Spring 2014)

